

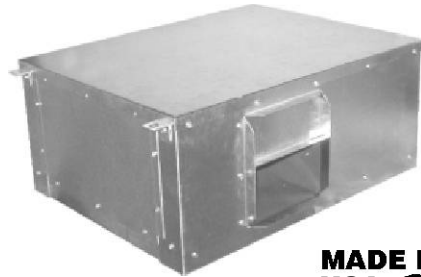
CC
SERIES

WATER SOURCE HEAT PUMP

Horizontal Unit - Replaces *Singer/Climate Control 'CC' Series*

NOMINAL CAPACITY:

10,000, 12,000, 15,000, 20,000, 26,000,
33,000, 40,000, 52,000 BTU/h



Description:

'CC' Series is a direct replacement for *Singer/Climate Control 'CC' series 'C'* revision ducted horizontal water source heat pump units. This version **does not directly replace** other revision code units. The 'CC' is a complete unit that contains the compressor, blower, air heat exchanger, water heat exchanger, and safety and control components. Low Voltage wiring is compatible with the **original wall thermostat**. **Duct connections** are identical and line right up with the **existing ductwork**. A full range of unit sizes is available and each is **dimensionally identical** to the original for a fast, easy, and trouble free installation. Proven technology, quality components, careful design and testing, and the latest in reliability and efficiency advances assure long life, user satisfaction, and lower energy cost! Consider the extensive list of standard features which includes: **powder painted drain pan**,

refrigerant circuit **access ports**, **air filter**, **thermostatic expansion valve**, high efficiency 'PSC' **blower motor** & dynamically **balanced DWDI blower wheel**, evaporator **freeze protection**, water coil **freezestat**, **high-pressure** over protection, and **lockout circuit**..... and the replacement solution the competition can't match. Heavy gauge **mounting brackets** and **isolation grommets** are provided. The 'CC' with a customer friendly **one-year parts and labor** warranty and **five-year compressor** warranty, (see *Warranty* document for details). Extended warranties available.

Application & Benefits:

The 'CC' series replacement units **fit the existing** space and ductwork without modifications. The unit installs without the need for **water loop shut-down** or **draining**. Water, drain, hanger bracket, ductwork, and electrical connections **line right up** to the original installation. The standard high-pressure switch and evaporator coil freeze protection stops unit operation **before damage occurs** should airflow become reduced or obstructed due to dirty coils, obstructed airflow, or motor failures or lock-up. A freezestat protects the water coil from **freeze damage** due to water temperature or flow problems. The water coil is designed for low water-side pressure drop eliminating potential **pump sizing** and **water flow** problems. High efficiency compressors provide demonstrated **reliability** and **low sound** levels and cut **energy costs**...and because the chassis dimensions and construction details are like the original, replacement work is **fast** and **easy**. Using replacements **eliminates** the need for **room renovation**, **redecorating**, **ductwork** and **pipng changes** and is *the solution* that gets your property back in service quickly and at the **lowest total cost**.

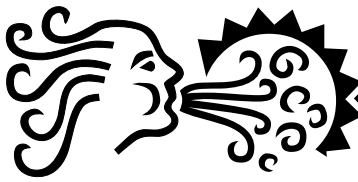
Options/Accessories:

•115V, 265V 1ph 208/230V 3ph, 460V 3ph,
(availability varies by model size)

•Hose kits
•Extended Warranty

Standard Features

- | | |
|--|---|
| 1). Made in USA | 10). Lock-out circuit with reset at thermostat or circuit breaker |
| 2). Designed for easy installation & compatibility. Dimensionally identical to original <i>Singer/Climate Control</i> unit | 11). High Pressure switch |
| 3). UL listed components and construction | 12). Frost free cooling |
| 4). Quiet, durable, and efficient compressor with built-in pressure & temperature protection | 13). Water coil freeze protection |
| 5). Heavy Gauge G90 galvanized steel construction | 14). Refrigerant circuit access ports |
| 6). Powder painted drain pan | 15). Bi-flow thermostatic expansion valve |
| 7). High efficiency copper tube-aluminum fin evaporator coil | 16). Positive shift reversing valve |
| 8). High efficiency coaxial condenser coil with low water-side pressure drop | 17). Precision charged with R407C or R410A refrigerant |
| 9). DWDI centrifugal blower w/high efficiency PSC motor | 18). 1/2" & 3/4" FPT water connections |
| | 20). 1" Fiberglass or natural fiber air filter |



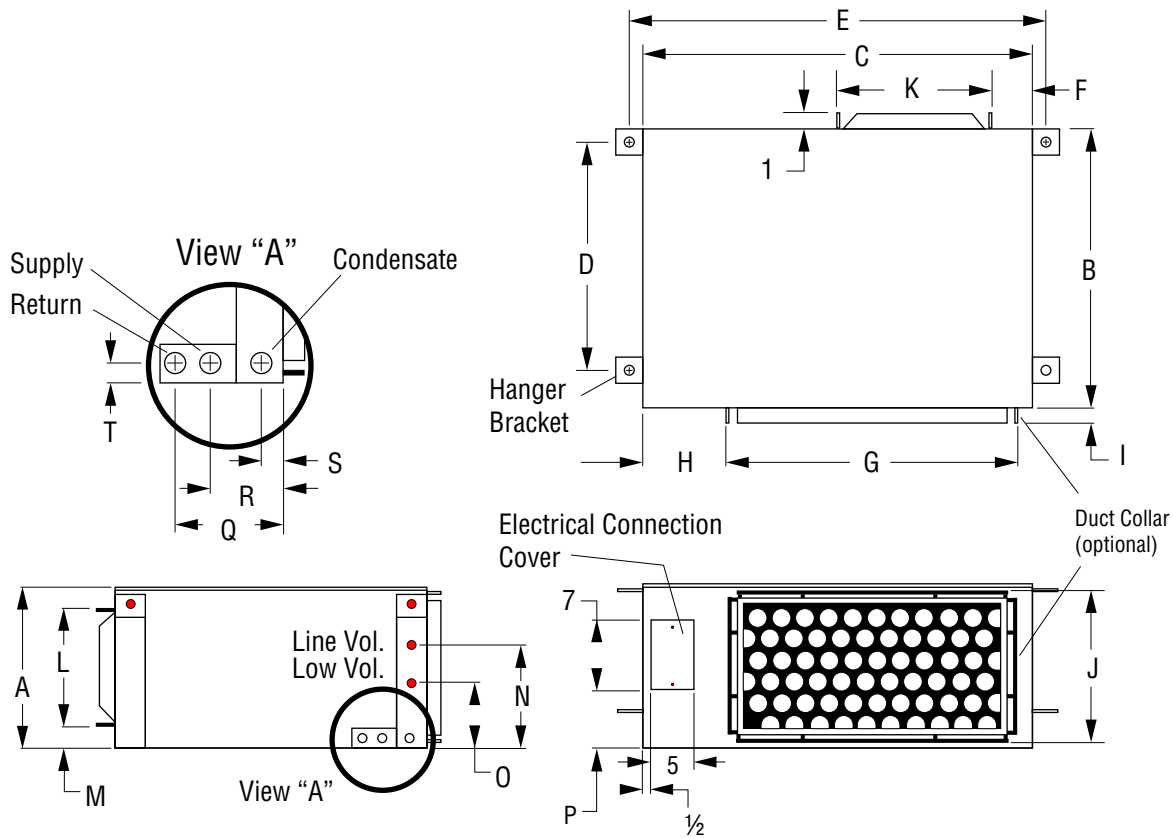
CC Dimensions and Specifications

Note: Due to ongoing quality & product development programs, design and specifications may change. Always consult factory to verify the information provided here.

DIMENSIONAL DETAIL 'CC'

PRELIMINARY

Model: No.	A	B	C	D	E	F	G	H	I	J	K	L	M	N	O	P	Q	R	S	T
CC- 10, 12	11 1/4	20 1/8	26 1/4	18 1/8	28 7/16	5 3/4	22 5/16	2 3/4	1 3/16	11	7 3/4	8 3/8	1 1/2	6 1/4	3	2 5/8	7 1/2	5 1/2	1 1/4	1
CC- 15, 20	16 1/4	20 1/8	26 1/4	18 1/8	28 7/16	3 3/4	18 5/8	7 1/16	1 3/16	14 3/8	8 7/8	9	2 7/8	11 1/2	9 1/4	7 3/4	7 1/2	5 1/2	1 1/4	1
CC- 26,33,40	20 1/4	20 7/8	33 3/4	18 7/8	35 15/16	5 3/4	25 1/8	7 7/8	1 3/16	20 1/8	10 7/8, 10 7/8, 13	10 3/16, 10 3/16, 11 3/8	2 15/16	15 1/2	13 1/4	11 3/4	7 5/8	5 3/8	2 1/2	1
CC- 52	21 1/8	20 3/4	46 3/4	18 3/4	48 5/8	9 1/2	34 1/8	11 3/4	1 3/16	20 1/8	13	11 3/8	3 13/16	16 3/8	14 3/8	12 5/8	7 5/8	5 3/8	2 1/2	1 3/4



CC- Series Preliminary Performance Ratings*

Model No.	Nominal CFM	Nominal Cooling			Nominal Heating		Refrigerant
		Total BTU/h	Sensible	EER	Total BTU/h	COP	
CC- 10	350	10,000	Consult Factory	Consult Factory	10,800	Consult Factory	407C
CC- 12	400	12,000	Consult Factory	Consult Factory	13,000	Consult Factory	410A
CC- 15	530	14,300	9,700	12.7	18,000	4.3	410A
CC- 20	665	19,200	Consult Factory	12.8	24,000	4.2	410A
CC- 26	800	24,000	Consult Factory	Consult Factory	28,500	Consult Factory	410A
CC- 33	1,000	33,000	Consult Factory	Consult Factory	35,500	Consult Factory	410A
CC- 40	1,200	40,000	Consult Factory	Consult Factory	43,000	Consult Factory	410A
CC- 52	1,800	51,000	38,000	13.8	63,000	4.4	410A

* Rated in Accordance with ARI